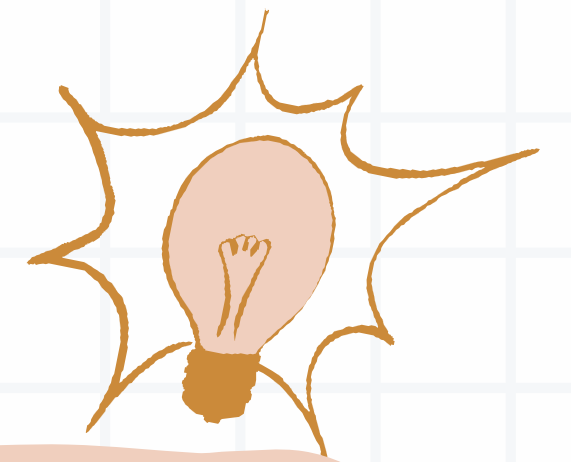


## LEADERSHIP

- Increased opportunities for learners to contribute to school improvement
- Review of Whole School Vision, Values and Aims with all members of our school community

## ASSESSMENT

- Develop use of feedback, learning intentions and success criteria to support learners to understand what they are learning and how to improve



## CURRICULUM

- Raise attainment in Literacy and Numeracy for all learners
- Review of IDL learning missions and RME curriculum



## PARENTAL ENGAGEMENT

- Develop use of Seesaw to share learning and achievement between home and school
- Further opportunities for parents/carers to come into school to see learning in action

## SUPPORT FOR ALL

- Adults will learn more about how to give the right help to all learners so all classrooms have the same helpful tools and supports
- Achieve Gold Rights Respecting Schools Award
- Review of Anti-Bullying policy to ensure everyone feels safe and respected at Greenbrae School

## PLAY

- Further opportunities to learn through play in every class by creating and implementing new Play Rationale

